

Madison, Wisconsin

# CITY OF MADISON

## CITY ENGINEERING DIVISION

### DEPARTMENT OF PUBLIC WORKS

# PLAN OF PROPOSED IMPROVEMENT

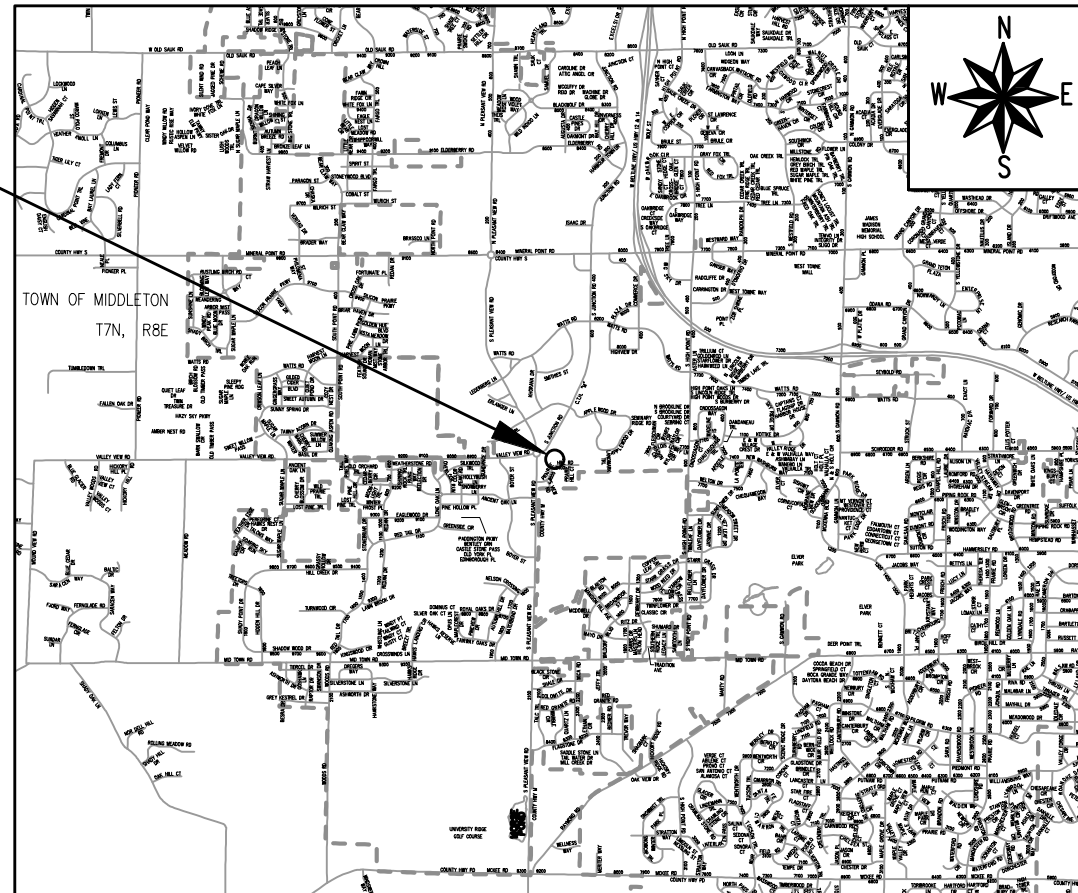
## WESTVIEW HILLS CHANNEL IMPROVEMENT

#### INDEX OF SHEETS

SHEET NO. 1	COVER SHEET
SHEET NO. EX1	EXISTING CONDITIONS
SHEET NO. GP1	GRADING, EROSION CONTROL & UTILITY PLAN
SHEET NO. C1	CLEARING PLAN
SHEET NO. P1	CHANNEL PLAN & PROFILES
SHEET NO. X1-X3	CHANNEL CROSS SECTIONS

CITY PROJECT NO. 13724  
CONTRACT NO. 9478

PROJECT  
LOCATION



PUBLIC IMPROVEMENT PROJECT  
APPROVED

APPROVED DATE

JULY 22, 2021

BY THE COMMON COUNCIL  
OF MADISON, WISCONSIN

PUBLIC IMPROVEMENT DESIGN  
APPROVED BY:

*Greg Fries*

Jul 23, 2021

City Engineer

Date

STORM SEWER  
DESIGNED BY:



Jul 23, 2021

#### UTILITY CONTACTS

Verizon: Mark Fisher 262-349-5861

TDS: Jerry Meyers 608-664-4404

MG&E (Gas): Steve Beversdorf 608-252-1552

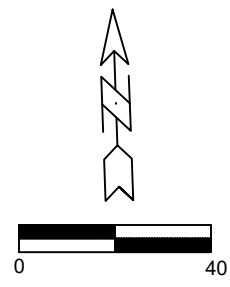
MG&E (Elec) John Blood 608-252-7309

PLOT SCALE: 1:1\_XREF

PLOT NAME: ---

REV. DATE: 7/22/2021 1:25 PM

ORIGINATOR: CITY\_OF\_MADISON



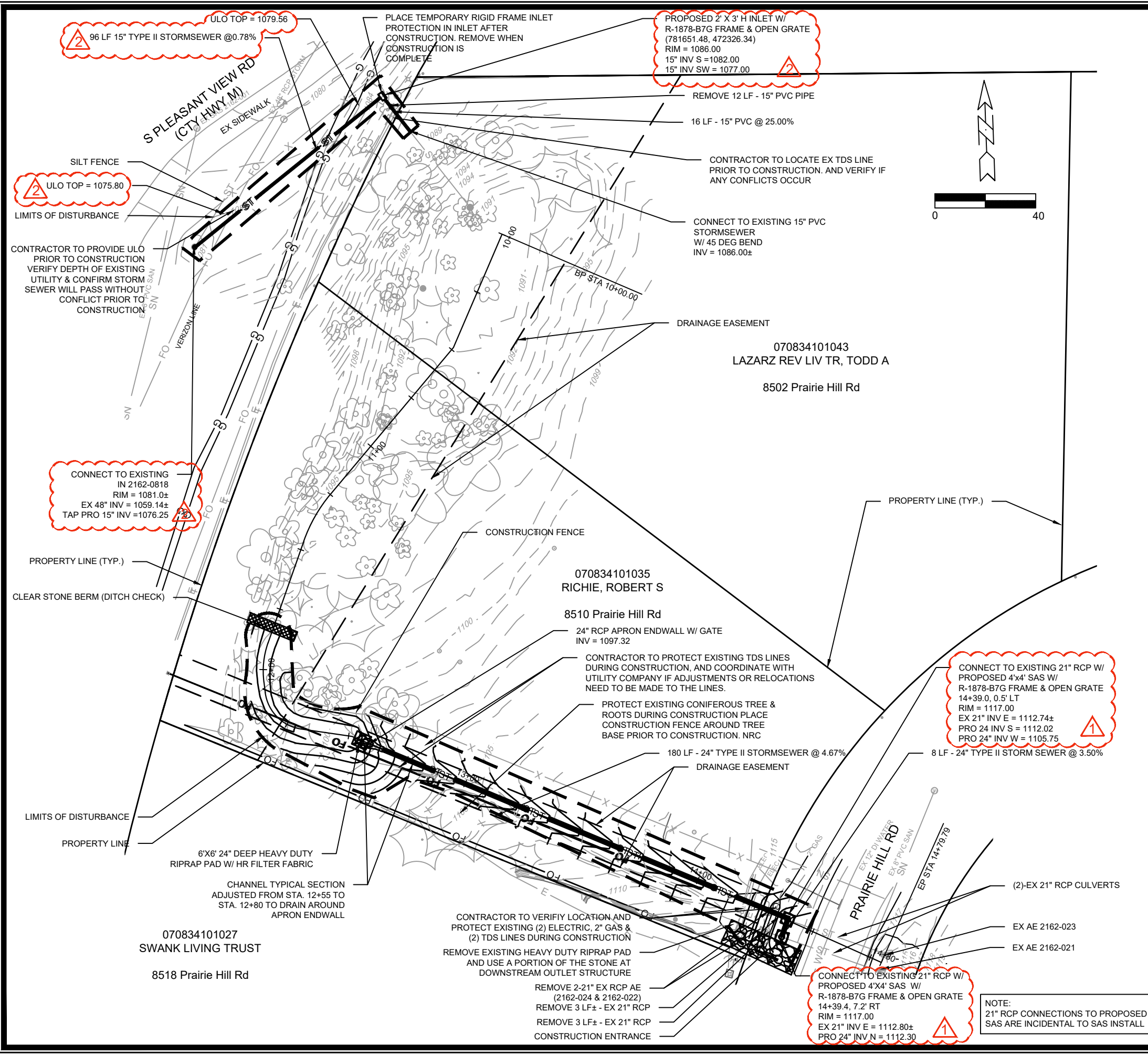
ADD EX TDS CONDUIT	09/22/21	GVP
MARK	REVISION	DATE
Designed By: gvp	Date: 9/22/2021 11:29 PM	Scale: #####
13724	13724	2

EXISTING CONDITIONS	13724
WESTVIEW HILLS CHANNEL	MADISON, WI
M:\DESIGN\Projects\13724\CAD\Sewers\13396 Westview Existing.dwg	9478
CONTRACT NO:	

13724
EX1



**GENERAL NOTES**


1. ALL WORK SHALL BE PER THE CITY OF MADISON STANDARD SPECIFICATIONS
2. IF ANY ERRORS, DISCREPANCIES, OR DIMENSIONS WITH PLAN BECOME APPARENT. IT SHALL BE BROUGHT TO THE ATTENTION OF THE ENGINEER PRIOR TO CONSTRUCTION
3. CONTRACTOR SHALL ENSURE THAT ALL STORMWATER DRAINS AWAY FROM BUILDING FOUNDATIONS DURING FINAL RESTORATION

**EROSION CONTROL NOTES:**

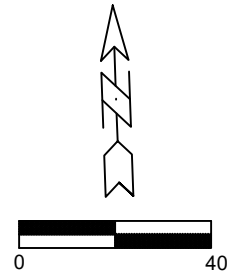
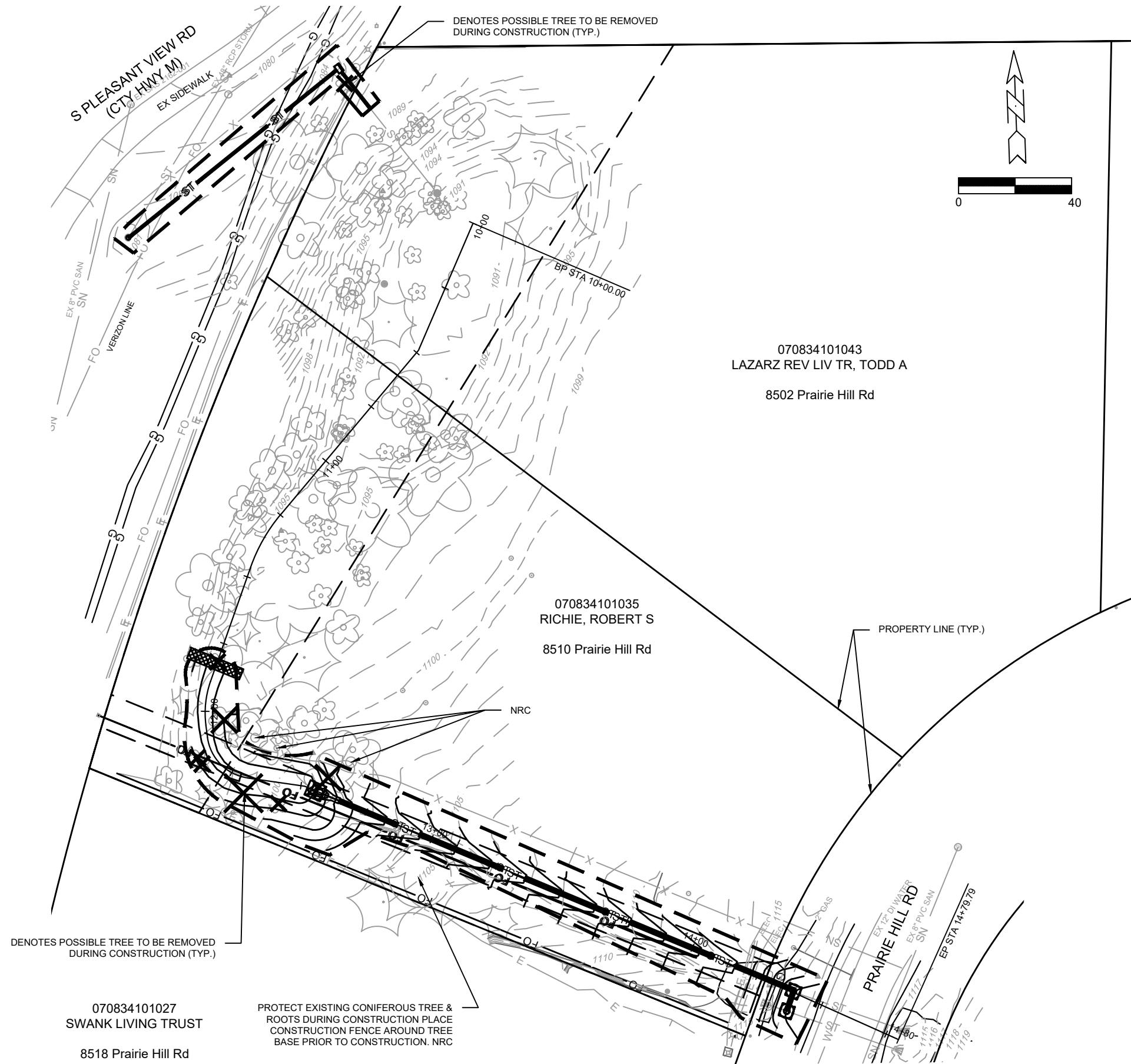
1. ALL EROSION CONTROL MEASURES SHALL BE CONSTRUCTED AND MAINTAINED BY THE CONTRACTOR IN ACCORDANCE WITH THE WISCONSIN DNR TECHNICAL STANDARDS AND CITY OF MADISON STANDARD SPECIFICATIONS.
2. INSTALL EROSION CONTROL MEASURES PRIOR TO ANY SITE WORK, MODIFICATIONS TO SEDIMENT CONTROL DESIGN MAY BE CONDUCTED TO MEET UNFORESEEN FIELD CONDITIONS. THE CONTRACTOR SHALL PLACE SILT SOCK OR SILT FENCE AT THE DIRECTION OF THE CONSTRUCTION ENGINEER.
3. EROSION CONTROL MEASURES INDICATED ON THE PLANS SHALL BE CONSIDERED MINIMUMS. IF DETERMINED NECESSARY DURING CONSTRUCTION ADDITIONAL MEASURES SHALL BE INSTALLED TO PREVENT SEDIMENT FROM LEAVING THE SITE.
4. THE CONTRACTOR IS RESPONSIBLE FOR THE CONSTRUCTION AND MAINTENANCE OF ALL EROSION CONTROL MEASURES UNTIL FINAL ACCEPTANCE BY THE CITY OF MADISON
5. NO SITE GRADING OUTSIDE OF THE LIMITS OF DISTURBANCE
6. INSTALL TYPE D INLET PROTECTION IN ALL STORM SEWER INLETS AND CATCH BASINS THAT MAY RECEIVE RUNOFF FROM DISTURBED AREAS
7. CUT AND FILL SLOPES SHALL BE NO GREATER THAN 3:1
8. ALL DISTURBED AREAS SHALL BE STABILIZED WITH CLASS I, TYPE B EROSION MATTING AND ALL DRAINAGE SWALES SHALL BE STABILIZED WITH CLASS II, TYPE C EROSION MATTING.
9. ALL INCIDENTAL MUD TRACKING OFF-SITE ONTO ADJACENT PUBLIC THOROUGHFARES SHALL BE CLEANED UP AND REMOVED BY THE END OF EACH WORKING DAY USING PROPER DISPOSAL METHODS.
10. PREVENT EXCESSIVE DUST FROM LEAVING THE CONSTRUCTION SITE IN ACCORDANCE WITH LOCAL AND STATE REGULATIONS.
11. INSTALL EROSION CONTROLS ON THE DOWNSTREAM SIDE OF STOCKPILES.

ADDENDUM 2	05/02/21	GVP			
STORM SEWER INVERT REVISION	09/22/21	GVP			
REVISION			DATE	BY	
MARK			Scale: #####		
Designed By: gvp	Date: 9/22/2021 11:21 PM				
13724					GP1

13724  
 MADISON, WI  
 CONTRACT NO: 9478  
 GRADING, EROSION CONTROL & UTILITY PLAN  
 WESTVIEW HILLS CHANNEL  
 M:\DESIGN\Projects\13724\CAD\sewers\13396 Westview Grading.dwg

  
 13724  
 GP1

NOTE:  
 21" RCP CONNECTIONS TO PROPOSED SAS ARE INCIDENTAL TO SAS INSTALL



### LEGEND

**X** DENOTES POSSIBLE TREE REMOVAL FOR GREENWAY IMPROVEMENTS. VERIFY TREES TO BE REMOVED DURING CONSTRUCTION WITH ENGINEER

### GENERAL NOTES

1. TREES CALLED OUT ARE TREES THAT FALL WITHIN THE GRADING LIMITS
2. THE CONTRACTOR SHALL CONSULT THE ENGINEER PRIOR TO LIMBING ANY TREES THAT ARE TO REMAIN
3. BRANCHES BROKEN ON SAVED TREES, DURING THE FELLING OF ADJACENT TREES, SHALL BE CUT OR LIMBED IN ACCORDANCE WITH THE STANDARD SPECIFICATIONS.
4. STUMPS WITHIN THE GRADING LIMITS SHALL BE GRUBBED

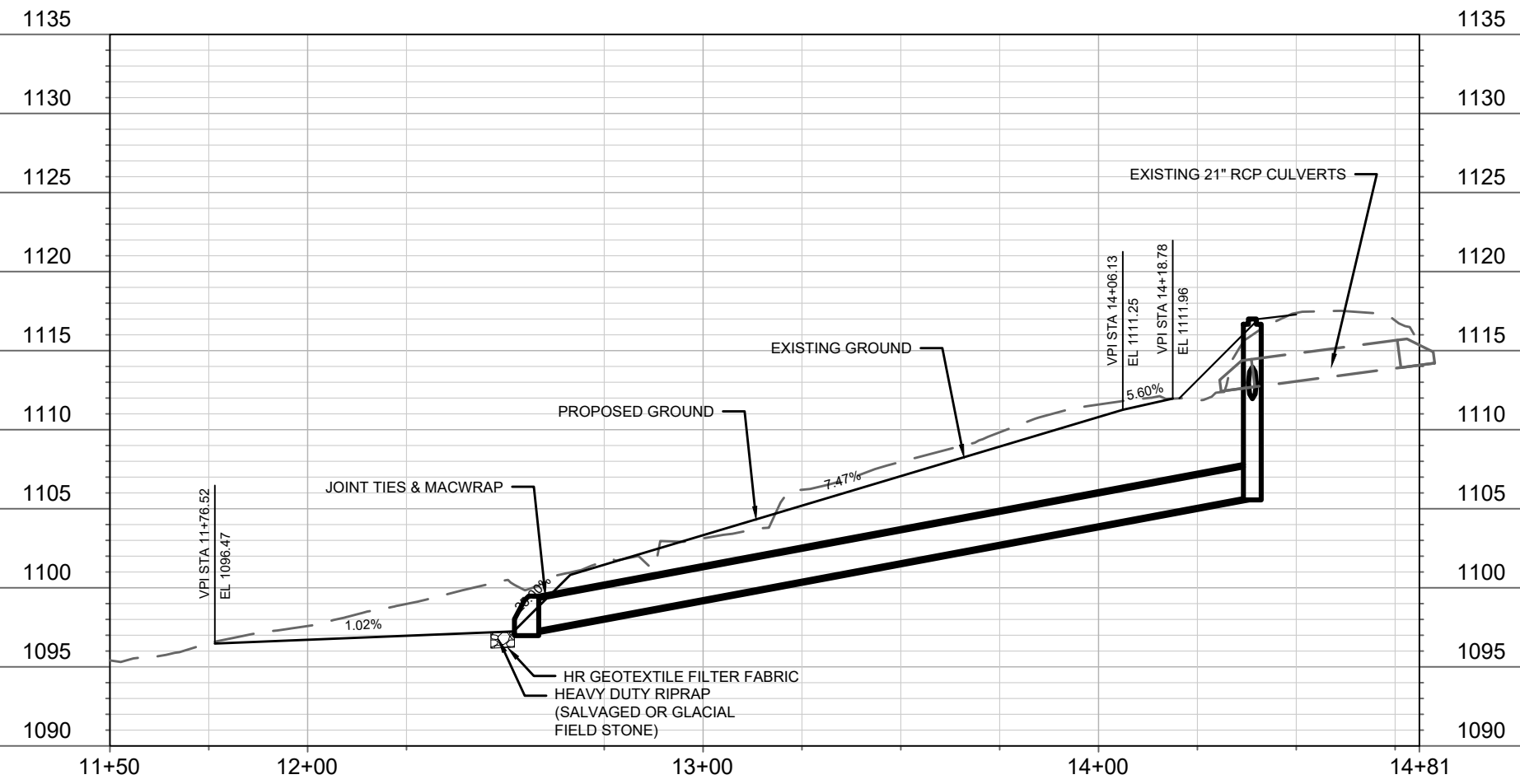
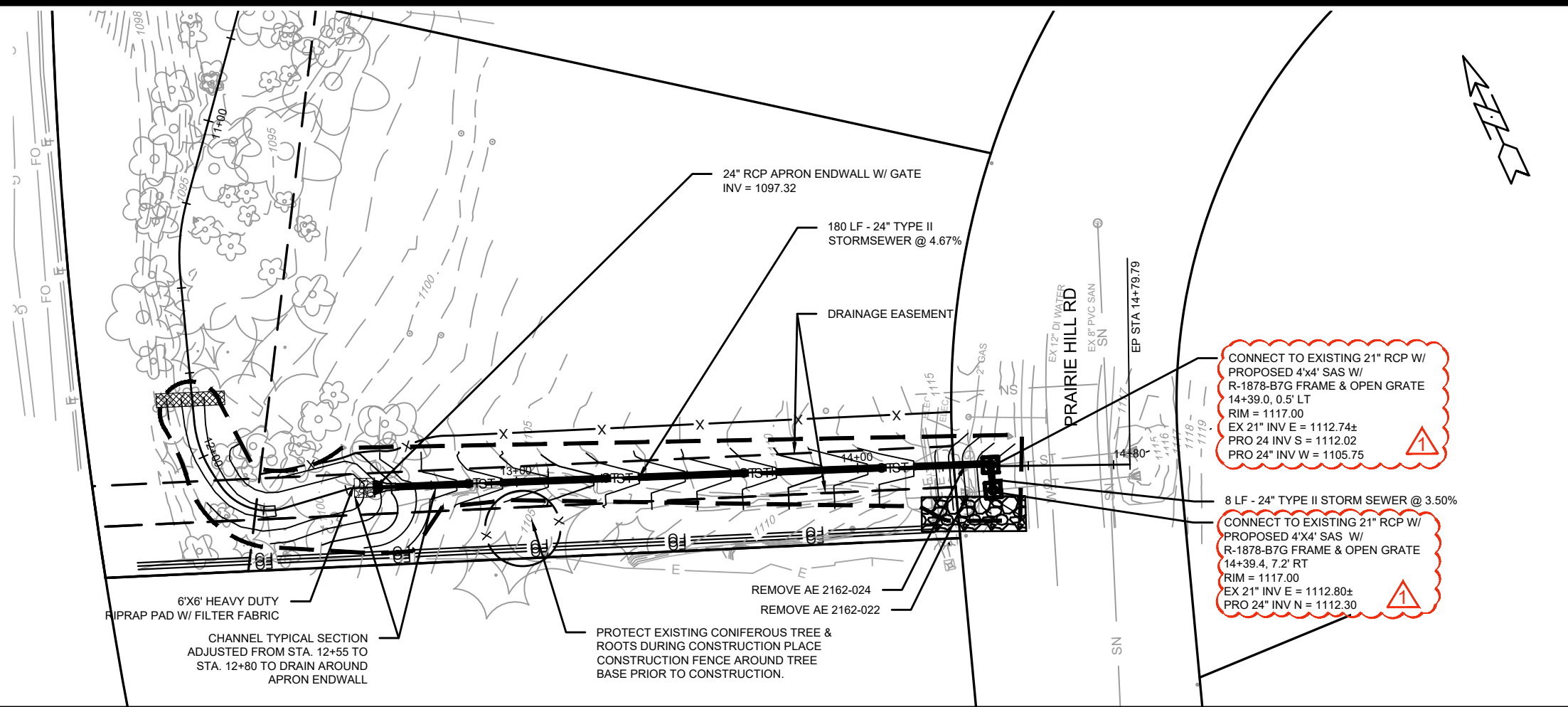
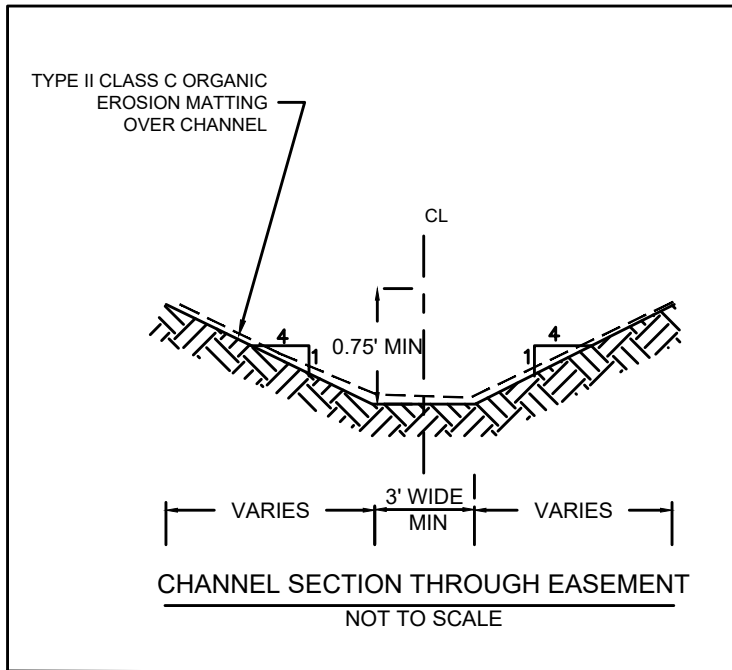
MARK	REVISION	DATE	BY
13724			
Designed By: gvp	Date: 10/8/2021 2:59 PM	Scale: #####	C1

13724  
MADISON, WI  
9478  
CONTRACT NO:

CLEARING & PROTECTION PLAN  
WESTVIEW HILLS CHANNEL  
M:\DESIGN\Projects\13724\CAD\Sewers\13396 Westview Grading.dwg



13724  
C1



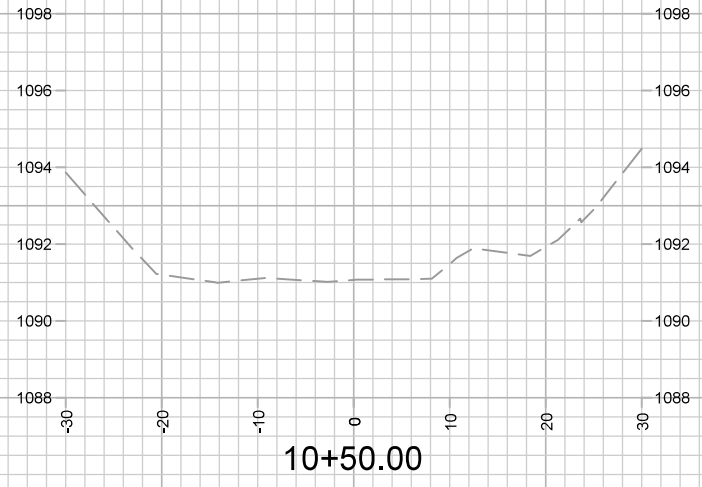
ADDENDUM 2	03/02/21	GVP
MARK	REVISION	DATE
BY	BY	BY
DESIGNED BY: GVP	DATE: 7/7/2021 1:43 PM	Scale: #####
13724	13724	P1

13724  
MADISON, WI  
9478  
CONTRACT NO:

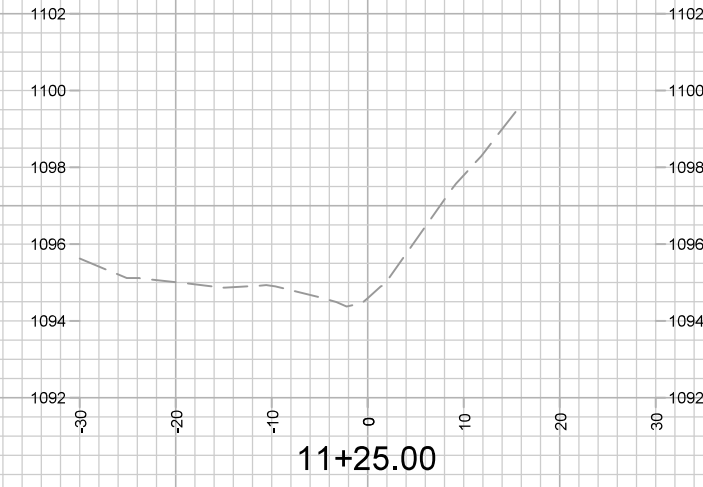
WESTVIEW HILLS CHANNEL PLAN PROFILE  
WESTVIEW HILLS GREENWAY  
M:\DESIGN\Projects\13396\CAD\Sewers\13396 Westview Grading.dwg



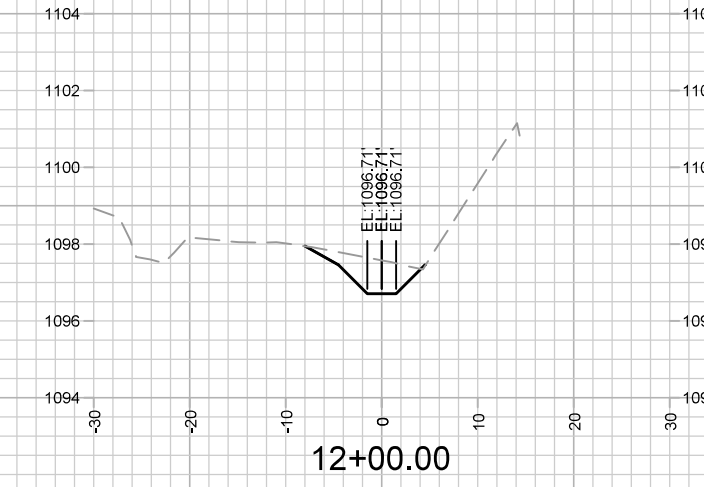
13724  
P1



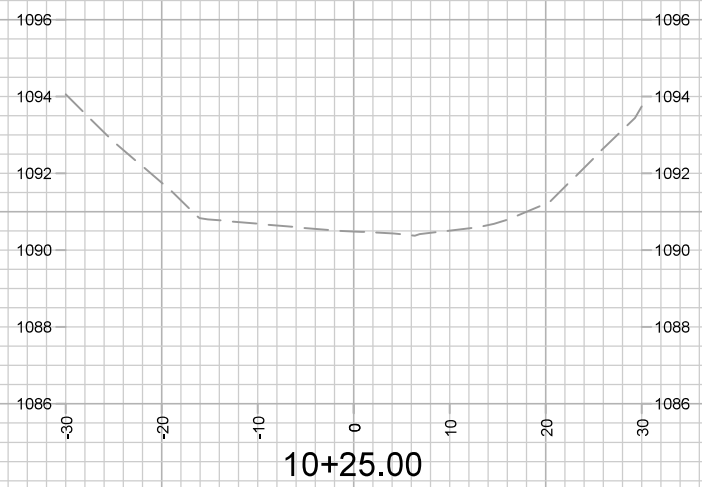
10+50.00



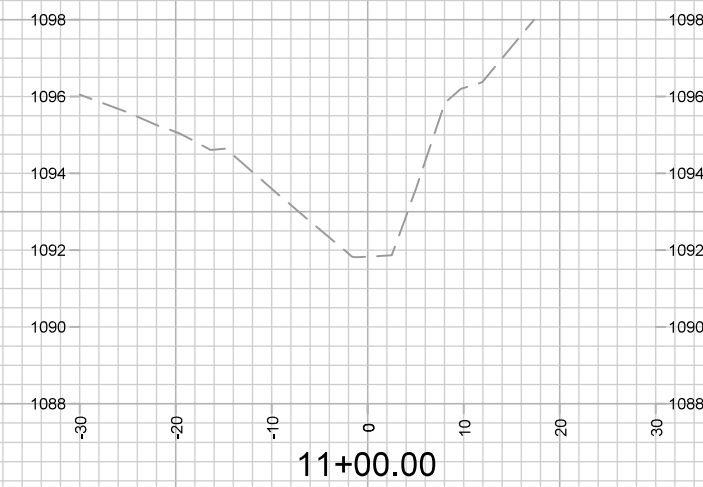
11+25.00



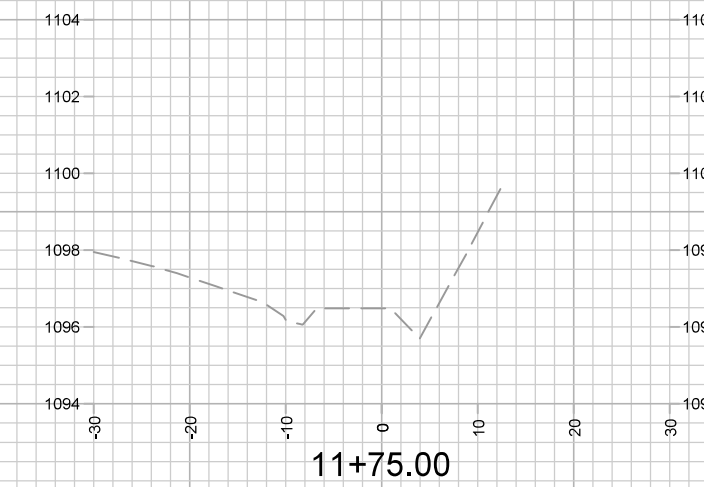
12+00.00



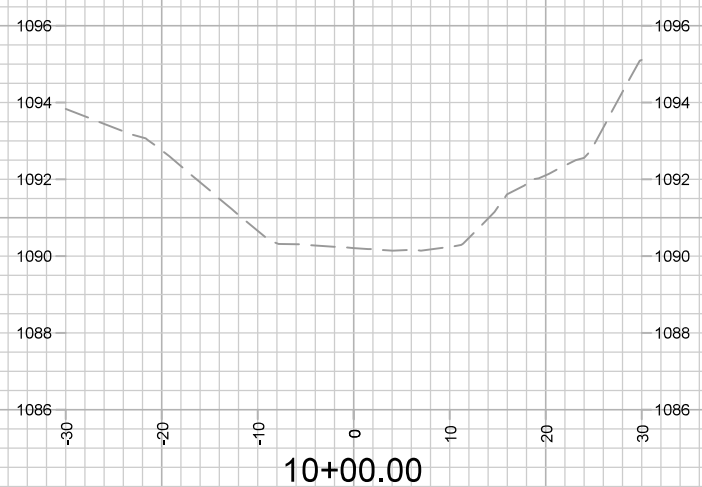
10+25.00



11+00.00



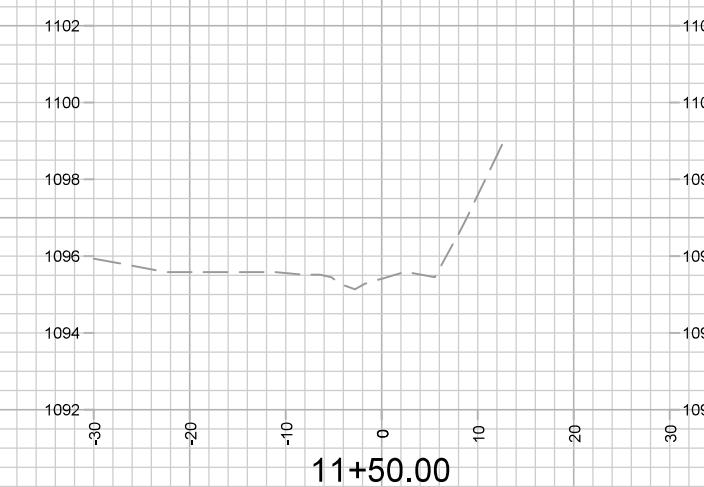
11+75.00



10+00.00



10+75.00



11+50.00

MARK	REVISION	DATE	BY
13724			
Designed By: GVP		Date: 7/22/2021 1:41 PM	Scale: #####
13724			X-1

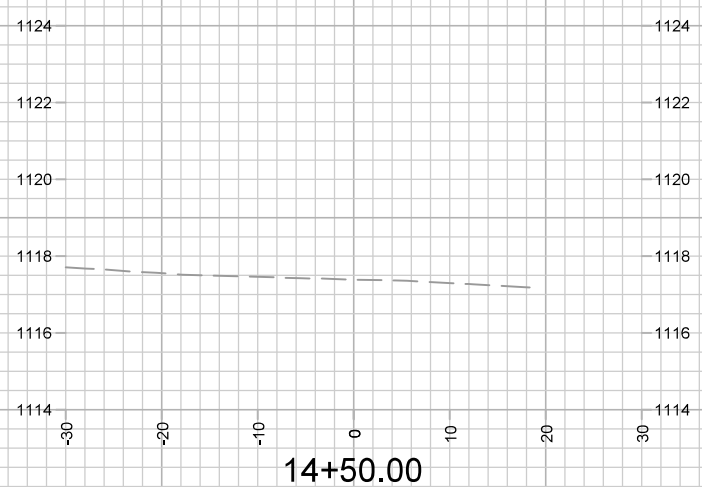
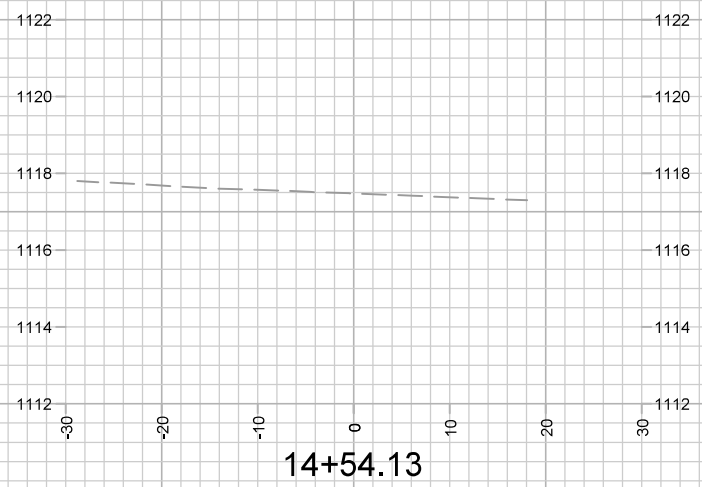
13724  
MADISON, WI  
CONTRACT NO: 9478

SECTION SHEET - (1)  
WESTVIEW HILLS CHANNEL  
M:\DESIGN\Projects\13724\CAD\sewers\13396 Westview Grading.dwg



13724  
X-1





MARK	REVISION	DATE	BY
13724	7/22/2021 1:41 PM	#####	X-3

SECTION SHEET - (3)  
 WESTVIEW HILLS CHANNEL  
 M:\DESIGN\Projects\13724\CAD\sewers\13396 Westview Grading.dwg  
 13724  
 MADISON, WI  
 9478  
 CONTRACT NO:

